



Syosset Central School District

Facilities Repair and Improvement Update

October 19, 2020

“Phase 2” Facilities Projects - Background

A Building Condition Survey (BCS) completed in 2015 demonstrated the school buildings, all now approaching 70 years old, required significant refurbishments.

The District, with the support and feedback of the community, structured a multi-year Capital Improvement Project plan to address the needs of the facilities with the following goals:



Modernize instructional spaces

Enhance security

Improve traffic flow

**Perform building repairs
& system updates**

Track & Field, Pre-Construction



New Track & Field



8-Lane track Artificial Turf Field Accommodates Soccer

New Track & Field



New/Refurbished Tennis Courts



Two New Courts, Refurbished Existing Courts

Old Weight Room Housed in "Portables"



Fitness Center Addition - Exterior



- Adds locker and bathroom facilities.
- Enclosed the courtyard.
- Connects 2 hallways with an enclosed walkway.
- Provides a large space that can be isolated from remainder of building.

New Fitness Center Interior



Fitness Center Interior



Renovated Science Lab, Classrooms



New Furniture, Lab Desks, Fume Hoods

SHS Open-Air Walkway, Front Elevation Pre-Construction



New SHS Entrance, Security Vestibule



SHS Security Vestibule Interior



Before



After

- New Visitor Entrance with Security Booth
- Enclosed Walkway
- Enclosed Courtyard

South Grove Vestibule



Before



After

- New Enclosed Vestibule
- Connects Main Building and Annex



SWMS Drop Off Loop



SHS Faculty Lot



Berry Hill



Walt Whitman

New Traffic Patterns, Drop Off Loops,
Additional Parking, New Paving, Re-Grading

SHS Drop Off Loop



Before



After

- Separate Entrance for Buses
- Added car-only loop
- Added visitor parking (25 stalls)
- Widened South Woods Road for Bus Staging

New Rooftop AC Units



COVID-19 Related Facilities Updates

The conditions resulting from the global pandemic required many adjustments to the facilities to aid in mitigating the spread of the virus.

During the summer of 2020, extensive work was done to create a system of redundant physical protections within the school environment. Facilities-related work included:

- Ventilation upgrades
- Isolation rooms identified
- Bathrooms: touchless fixtures installed
- Classrooms: desktop barriers installed; furniture removed/reconfigured to allow for social distancing
- Portable hand washing stations installed in secondary schools
- Tents erected for outdoor instructional space/lunch space

Bathrooms With Touchless Faucets, Soap Dispensers



Classrooms With Desks Spaced 6 Feet Apart, Desktop Barriers



Portable Hand Washing Stations



Temperature Screening



Outdoor Instructional Spaces, Cafeteria Space



Up Next: Energy Performance Contracting (EPC) Projects

Annual savings: \$1,199,260; 64%

Estimated net cash flow to District
(18 years): \$7.7 million

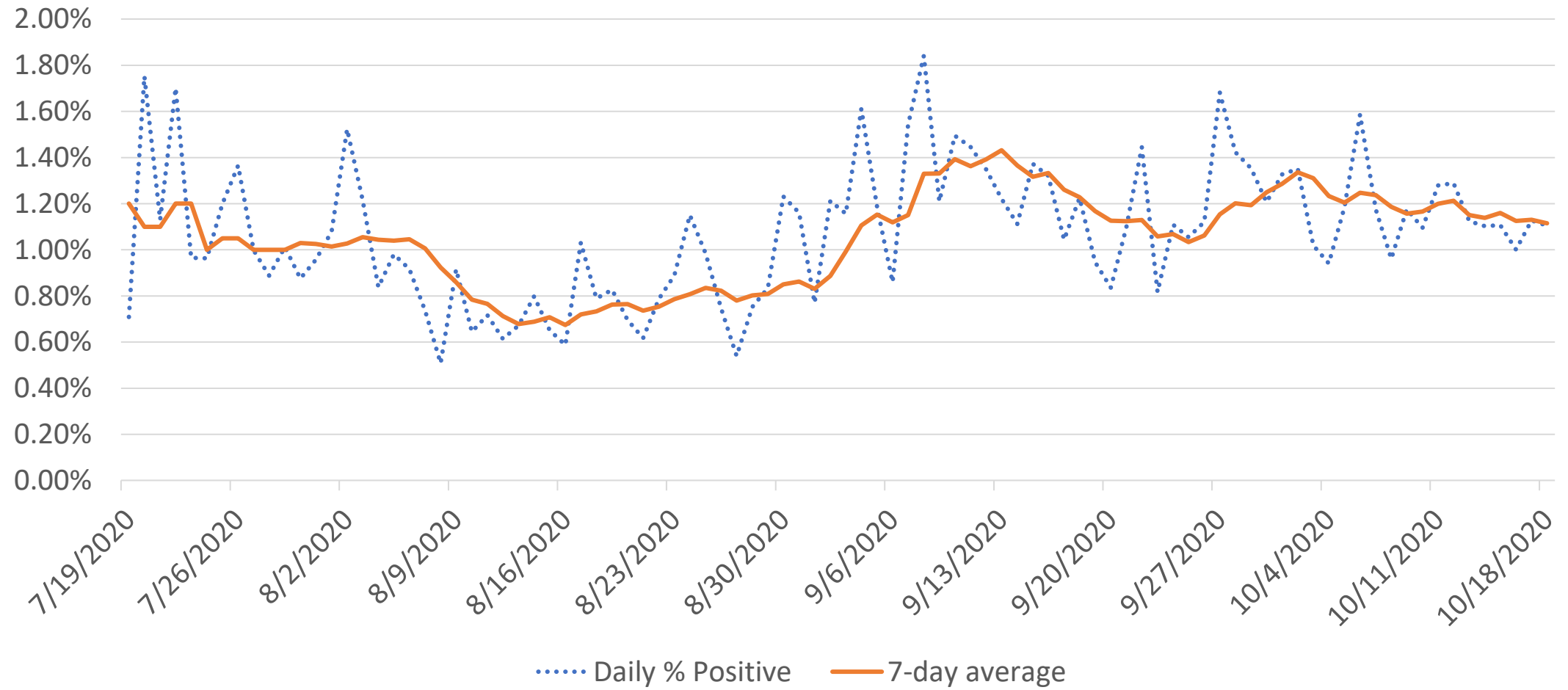
- Replace furnaces at Baylis, South Grove Annex, Village and Willits.
- Install solar panels on five schools for energy conservation.
- Install Energy Management Systems in all schools.
- Install Cogeneration Unit to generate electricity and heat for heating and domestic hot water systems at Syosset High School.
- Replace lighting fixtures with more efficient LED lighting.
- Install Cogeneration Unit as an emergency backup generator at South Woods Middle School.

Reopening Information:

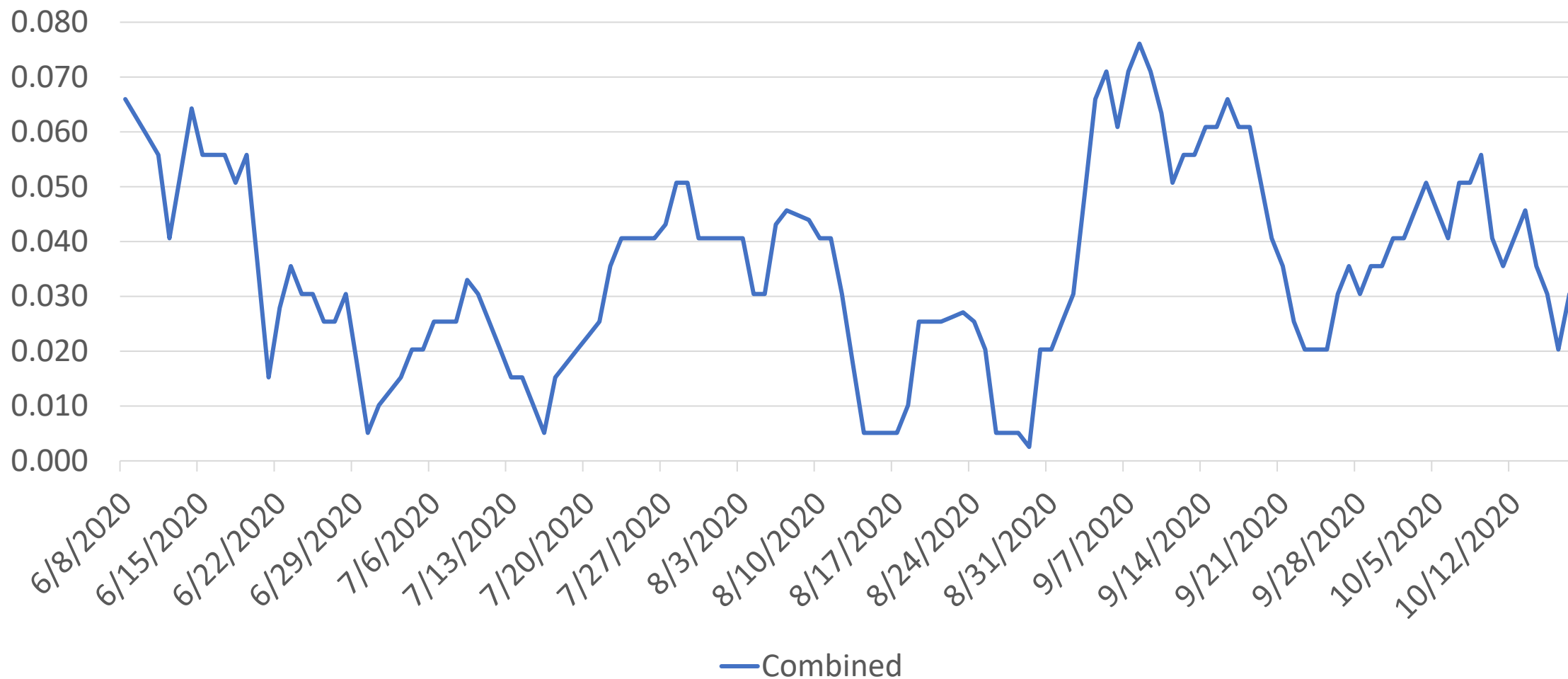
Monitoring and Data

- Regional and local infection measures.
- Communications algorithms:
 - Privacy Paramount
 - Email = notification
 - Text/Call = need to react
 - Coordinating with Nassau DOH
- Syosset COVID Hotline
- Syosset COVID Dashboard

Nassau % Positive






New Cases/1000
Syosset+ Woodbury – 7-day average





Syosset Schools COVID-19 Data Report

UPDATED OCTOBER 9, 2020

	SHS	HBT	SWMS	BAYLIS	BH	RL	SG	VILL	WW	WILLITS
 Current Cases ¹	1	0	0	0	0	0	0	0	0	0
 Resolved Cases ²	0	0	1	0	1	0	2	0	0	0
 Total Cases	1	0	1	0	1	0	2	0	0	0

1. A Current Case reflects an individual who tested positive for COVID-19 and is currently in isolation.
2. A Resolved Case reflects an individual who previously tested positive for COVID-19 but has been permitted to return to school per Department of Health regulations. Any close contacts have cleared the 14-day quarantine without infection.

Data reflects cases of individuals in the in-person instructional model only.